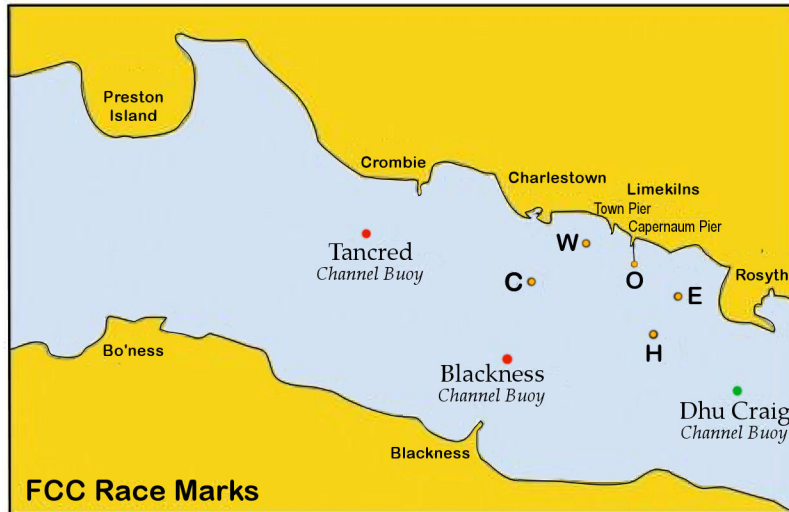


Race Courses



O is start line outer mark

Direction of rounding:

leave marks in **GREEN** to starboard, in **RED** to port

EAST WIND

E1 E_H_W_O_E_W_O_E_H_W_O
 E2 E_H_W_O_Blackness_C_O_E_H_W_O
 E3 Dhu Craig_Tancred_O_E_H_W_O
 E4 E_Blackness_W_O_E_H_W_O_E_H_W_O
 E5 E_H_W_O_E_C_W_O
 E6 E_C_H_W_O_E_C_H_W_O_H_W_O
 E7 E_C_O_E_H_O_E_H_W_O

WEST WIND

W1 Tancred_H_E_O_C_H_O_W_H_E_O
 W2 C_E_O_C_H_O_W_H_E_O
 W3 C_H_E_O_C_H_O_W_H_O
 W4 C_W_H_O_C_E_O_H_E_O
 W5 C_Blackness_E_O_C_H_E_O_W_H_O
 W6 C_H_O_C_H_O_W_H_E_O
 W7 W_H_E_O_W_H_O_W_H_E_O

Mark description:

O, E, W, C and H = orange FCC buoys

Dhu Craig, Blackness and Tancred = catamaran channel marks